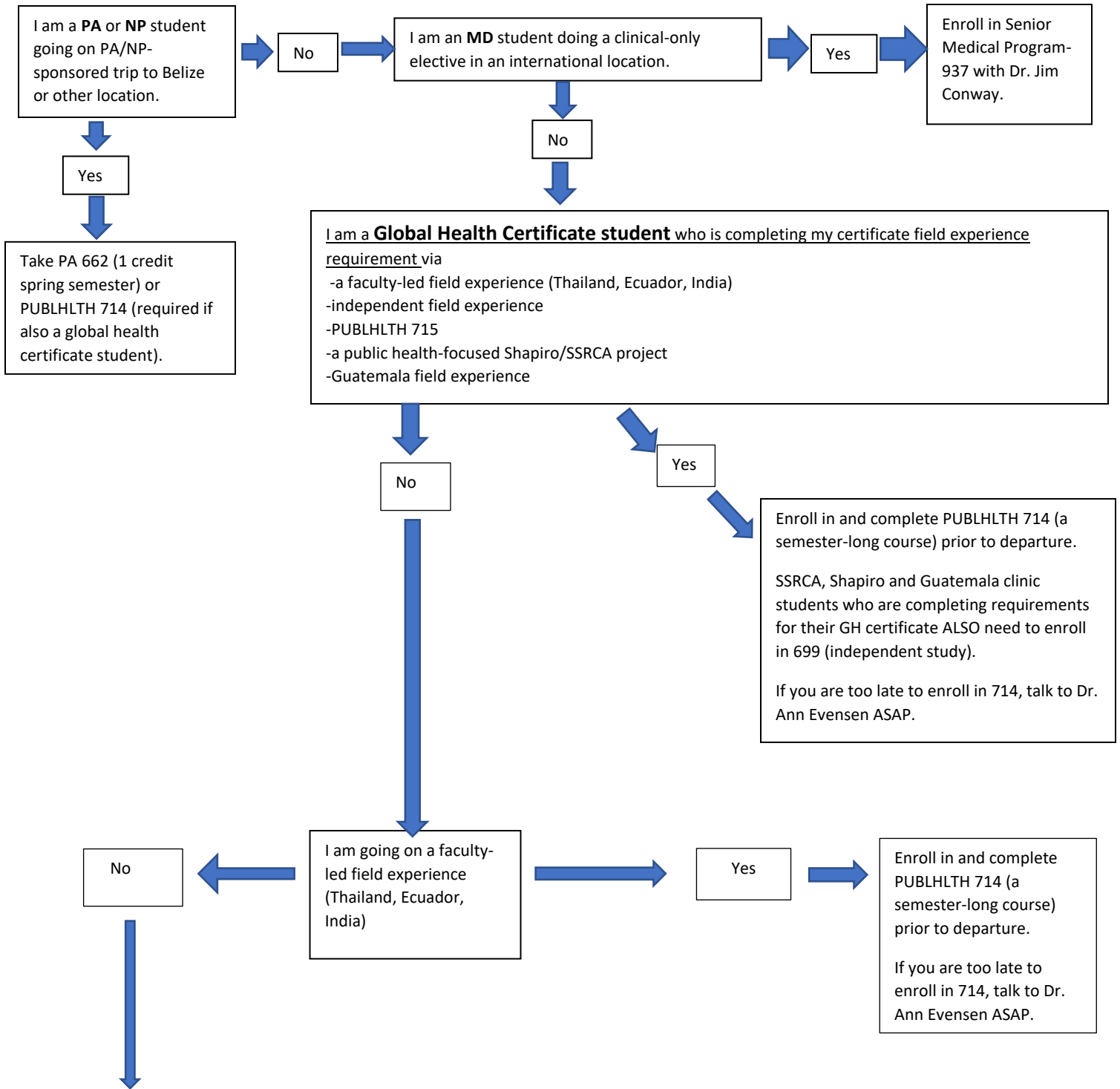


Do I need a prep class to go on an international experience?



Students who are not in the global health certificate program but are doing international Shapiro/SSRCA research OR who are participating in the Guatemala field experience should ask Dr. Ann Evensen to enroll in "Supplementary Modules" (no credits, online only) and complete these modules prior to departure. These students could also take PUBLHLTH 714 for prep *with credit*. Students who are not in the global health certificate program but are participating in the Guatemala field experience should discuss preparation requirements with Dr Jessica Schmidt.

**Anyone not fitting any of the above categories should consult Dr. Jim Conway for assistance. Email Betsy Teigland at [teigland@wisc.edu](mailto:teigland@wisc.edu) to schedule an appointment.**